

## Friends' Christmas Disco Thursday 7<sup>th</sup> December

### What's On Next Week

#### Sunday 3<sup>rd</sup> December

- ❖ 10.30am Sunday Service

#### Monday 4<sup>th</sup> December

- ❖ Dance Club
- ❖ Y1 & Y2 nativity  
Production 1.45pm

#### Tuesday 5<sup>th</sup> December

- ❖ Guitar Lessons
- ❖ Drama Club
- ❖ Football Club Y1-Y2
- ❖ Toast - 15p
- ❖ Y1 & Y2 Nativity  
Production 9.30am

#### Wednesday 6<sup>th</sup> December

- ❖ Multi-Sport Club
- ❖ Wednesday Church

#### Thursday 7<sup>th</sup> December

- ❖ Piano Lessons
- ❖ Tennis Club Y1-Y3
- ❖ Football Club Y3-Y6
- ❖ Gymnastics Club
- ❖ Violin Lessons
- ❖ FoW Christmas Disco  
EYFS & KS1 6-7pm  
KS2 7.15-8.15pm

#### Friday 8<sup>th</sup> December

- ❖ Piano Lessons
- ❖ Walking Bus
- ❖ EYFS Nativity Production  
9.30am



Dear Parent,

Thank you to parents who joined us at St. Peter's Church on Thursday for either of our Christingle Services. Thank you also to children who returned their candles full of donations to The Children's Society. We look forward to seeing parents over the last two weeks of term at our many Christmas events. We also have many treats planned for the children during the school days in the run-up to Christmas.

On Thursday 14<sup>th</sup> December, as an end of term treat for the children, we once again have a theatre company bringing panto to our school. West End in School will be performing Beauty and the Beast. Children are invited to wear a Christmas jumper to school on this day. If children do not already have a Christmas jumper please do not feel the need to purchase one. Customised jumpers with tinsel or other decorations will be fine. Parents are invited to make a voluntary contribution of £2 towards the cost of the panto.

The children break up for their Christmas holiday on Friday 15<sup>th</sup> December. On this day we will be holding an informal family carol service outside on our school field. Parents are invited to attend at 1.15pm to join us in singing carols around our tree. Hot drinks will be on sale for adults. Children should ensure they attend school with a coat and gloves. At the end of the service, should it be before 3pm, children can be collected from their classrooms. This event is obviously subject to the weather conditions on the day and in the unlikely event that it has to be cancelled because of rain, a text will be sent to parents.

As this is our last newsletter of 2017 may I take this opportunity to wish you all a very happy Christmas. I look forward to seeing the children back at school on Wednesday 3<sup>rd</sup> January 2018.

Kind regards,  
Mrs C. Gaskin  
Executive Headteacher

### Class Attendance Percentages for Week Commencing 20<sup>th</sup> November 2017

R Clee	91%
Y1 Snowdonia	97.9%
Y2 Malverns	97.7%
Y3 Wrekin	93%
Y4 Long Mynd	98.5%
Y5 Wenlock	98.3%
Y6 Brecon	95.5%

Congratulations this week's winners of the attendance award are Y4 Long Mynd - Excellent achievement for Mrs Suter and Mrs Grimsdale's class.

**Attendance target is for every class to be no less than 97%.**



F R I E N D S of W O R F I E L D  
Endowed CE Primary

# Christmas DISCO

Thursday 7th December  
in the School Hall

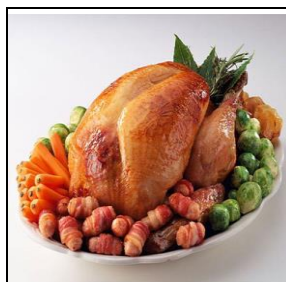
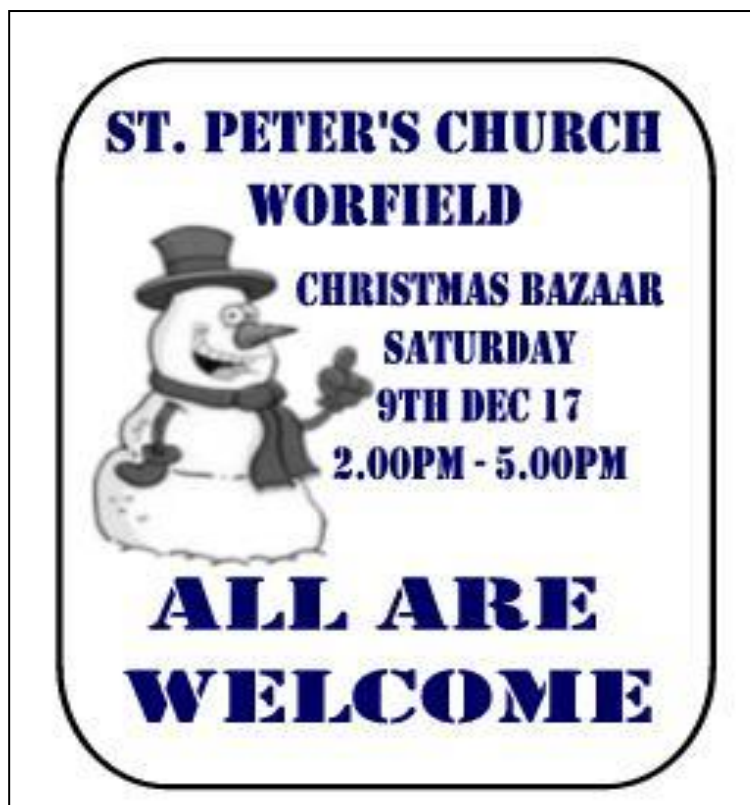
EYFS & KS1 6-7pm

Tickets £3

Prizes for the BEST DANCER

KS2 7.15 - 8.15pm

<p><b>Sunday 10<sup>th</sup> December</b></p> <ul style="list-style-type: none"> <li>❖ 10.30am Sunday Service</li> </ul>
<p><b>Monday 11<sup>th</sup> December</b></p> <ul style="list-style-type: none"> <li>❖ Dance Club</li> </ul>
<p><b>Tuesday 12<sup>th</sup> December</b></p> <ul style="list-style-type: none"> <li>❖ Guitar Lessons</li> <li>❖ Drama Club</li> <li>❖ Football Club Y1-Y2</li> <li>❖ Toast - 15p</li> <li>❖ School Christmas Lunch</li> </ul>
<p><b>Wednesday 13<sup>th</sup> December</b></p> <ul style="list-style-type: none"> <li>❖ Multi-Sport Club</li> <li>❖ Wednesday Church</li> <li>❖ Attendance 'Treat' Day for class with the highest attendance for the term!</li> </ul>
<p><b>Thursday 14<sup>th</sup> December</b></p> <ul style="list-style-type: none"> <li>❖ Piano Lessons</li> <li>❖ Tennis Club Y1-Y3</li> <li>❖ Football Club Y3-Y6</li> <li>❖ Gymnastics Club</li> <li>❖ Violin Lessons</li> <li>❖ School Pantomime - Beauty and the Beast</li> </ul>
<p><b>Friday 15<sup>th</sup> December</b></p> <ul style="list-style-type: none"> <li>❖ Piano Lessons</li> <li>❖ Walking Bus</li> <li>❖ 1.15pm Family Carol Service</li> <li>❖ School finishes for Christmas Holiday</li> </ul>



**School Christmas Dinner**  
 School Christmas Dinner will be held on Tuesday 12<sup>th</sup> December. All dinners must be ordered in advance (including EYFS and KS1) order forms are available from the school office - Jacket Potatoes and Sandwiches **will not** be available to order on the day



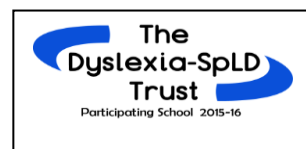
### Dates For The Diary



- Monday 4th December – KS1 Nativity - 1:30pm
- Tuesday 5th December – KS1 Nativity - 9:30am
- Thursday 7th December – FoW School Disco
- Friday 8th December EYFS Nativity - 9:30am
- Tuesday 12<sup>th</sup> December – School Christmas Lunch
- Thursday 14th December Panto - 9:30am
- Friday 15th December – KS2 Family Carol Service 1.15pm
- Friday 15th December 3pm – School Finishes for Christmas Holiday
- Wednesday 3<sup>rd</sup> January – Children return to school

### Worfield Walking Bus

New parent volunteers are required to help drive the walking bus. The Worfield School Walking Bus meet at the Village Hall at 8.25am every Friday morning and walk to school via Worfield Gardens. If you can help on Friday mornings please contact the school office.



tel: 01746 716606  
e-mail: [admin@worfield.shropshire.sch.uk](mailto:admin@worfield.shropshire.sch.uk)  
website: [www.worfield.shropshire.sch.uk](http://www.worfield.shropshire.sch.uk)